

SBM OFFSHORE

F4W - SC strategy

Alexandre De Prins

Shanghai, 01st December 2025



SBM Offshore is the world's deepwater ocean-infrastructure expert.
Our promise is True. Blue. Transition. —
enabling decarbonization and the
energy transition while diversifying to
support more industries in the blue
economy





Over 65 Years of an Excellence Journey & Purposeful innovation



More than 7,800 employees
worldwide



>15 Countries
with operations historically



>90% of workforce
nationalization
Targeted everywhere we operate



0.19 TRIFR
In 2024 turnkey activities



45% lower emissions
intensity
than Industry average



>40 FPSOs
Operated historically



>50 FPUs
Delivered historically



Prime Clients Portfolio
Trusted by Industry leaders



~400 years cumulative O&M
experience
embedded into design standard



> 98.5% of Uptime
historically



2.7Mbbls/d
Total installed capacity
(Leading among FPSO
Contractors)



> 7.6 Billion barrels
of production cumulatively to date



US\$35 Billion backlog
Ensuring financial stability



>\$10 BUSD in financing
raised in the last 5 years, enabling
clients' deferred cash-out



Pace & Cost
Industry-leading performance
As highlighted by clients



8 MPFs delivered &
2 under construction
Reducing client's time to market



Debottlenecking: F4W units
producing >100kbpd above
investment basis



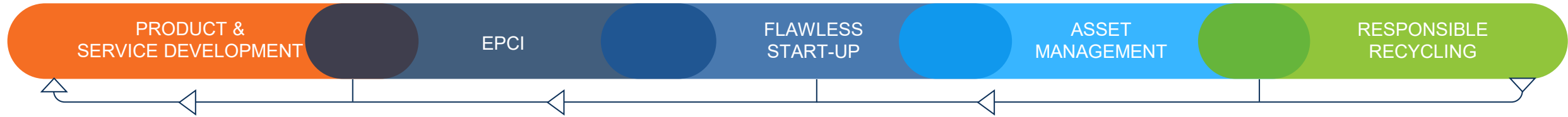
Industry First
ABS REMOTE-CON Notation
(FPSO Liza Unity)



Circa 700 offload per year



CONTINUOUS IMPROVEMENT



ON TIME EXECUTION

Fast4Ward® standardization

Achieving excellence through continuous learning

Leveraging strategic partnerships



FLAWLESS START-UP

Fast-track to plateau production

Record time to Flare-out

In-house installation capabilities



RELIABLE OPERATIONS

Solid uptime performance

Optimized operations leveraging fleet synergies & life-cycle overview

Ensure asset integrity via predictive maintenance and digital innovation

Fast4Ward®



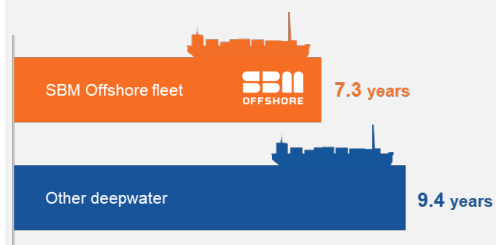
SBM's unique value proposition: Fast4Ward®



A design that fits a wide market with the flexibility to be tailored to the specific needs of a project

REDUCING CYCLE TIME

Up to 12 months faster



DE-RISKING PROJECTS

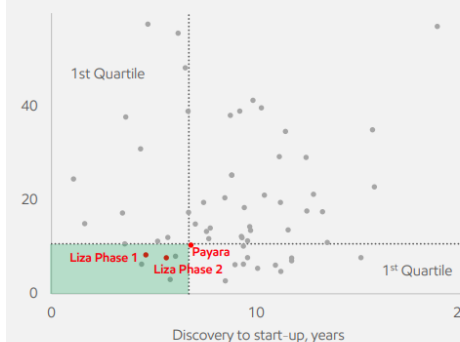
Standardized hull and topsides



ENABLING TOP QUARTILE COST PERFORMANCE

Lower CAPEX and OPEX

1st developments at industry-leading pace and cost¹
\$/oeb



Source: Wood Mackenzie and ExxonMobil internal analysis

Assuring value through Fast4Ward® and anticipation strategy

A design that fits a wide market with the flexibility to be tailored to the specific needs of a project, while reducing cycle-time

DE-RISKING PROJECTS IN COLLABORATION WITH CUSTOMERS

Standardized hull and topsides



HULL ORDERED IN
ANTICIPATION



GTG ORDERED IN
ANTICIPATION



MOUs WITH
STRATEGIC YARDS



RAW MATERIAL
RESERVATION

SWS 上海外高桥造船有限公司
SHANGHAI WAIHANGSHAN SHIPBUILDING CO. LTD.



BOMESC

ENABLING TOP QUARTILE PERFORMANCE



REDUCING
CYCLE TIME



MITIGATING
INFLATION RISK

DESIGNED TO OPERATE IN THE ATLANTIC

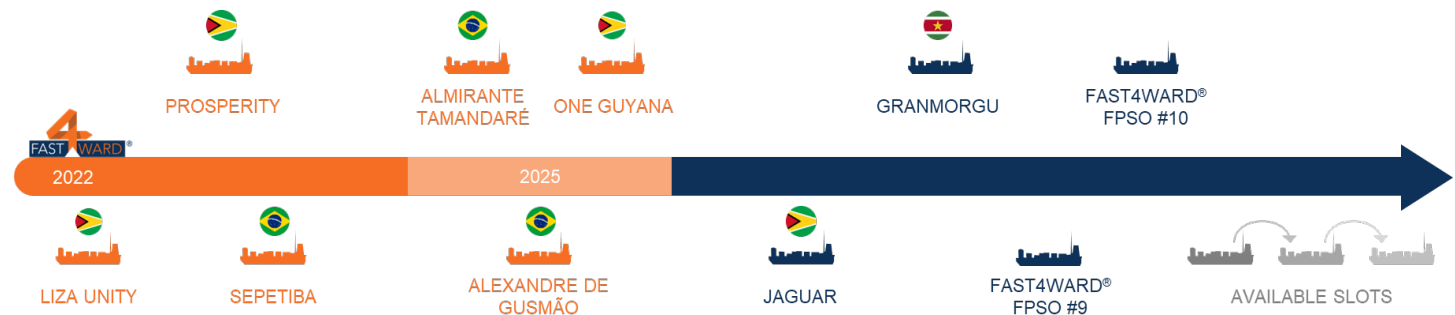
CLASS APPROVED BY ABS & BV

2017 – 2025: 10 HULLS ORDERED

8 HULLS DELIVERED

1 HULL BOOKED BY CLIENT

1 HULL SUPPORTING BID ACTIVITIES



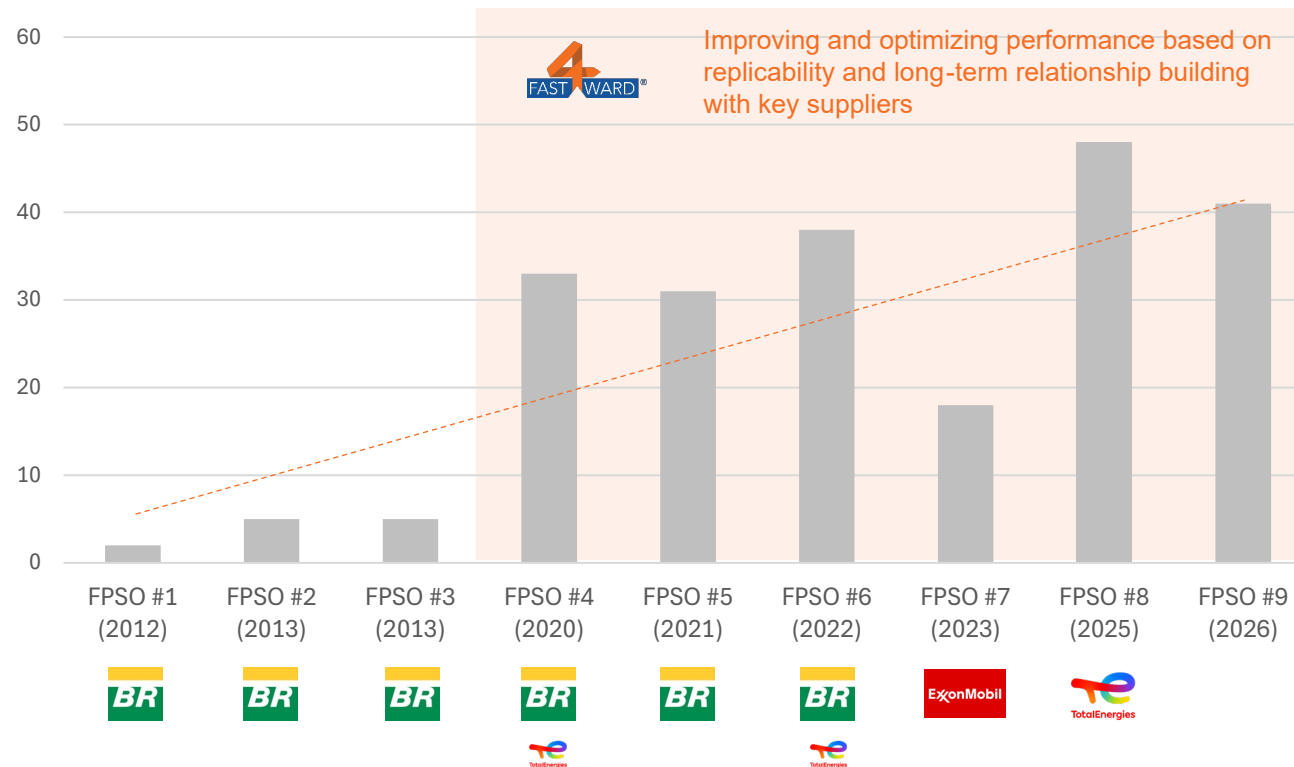
Overall progress:
> 60%
end-Oct 2025



Creating Long-term Supply-Chain Partnerships

The China success story example

TOPSIDE TONNAGE BUILT IN CHINA



SBM Shanghai Office (Opened Dec 2018)

Supporting Finance, HR, Supply Chain, IT, HSSE, QA & Regulatory, Commercial and Business Development



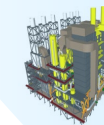
240+ Qualified Chinese Suppliers

Enabling proximity to yards, capacity growth, and competitive sourcing



10 MPF's ordered in China

6 operating, 2 delivered, 2 under construction



90 Topside Modules awarded to Chinese Yards

Equivalent to circa 170,000 tons since 2020

Driving the next generation of sustainable FPSO performance

Functionalities fully
integrated within the Overall
FPSO process design

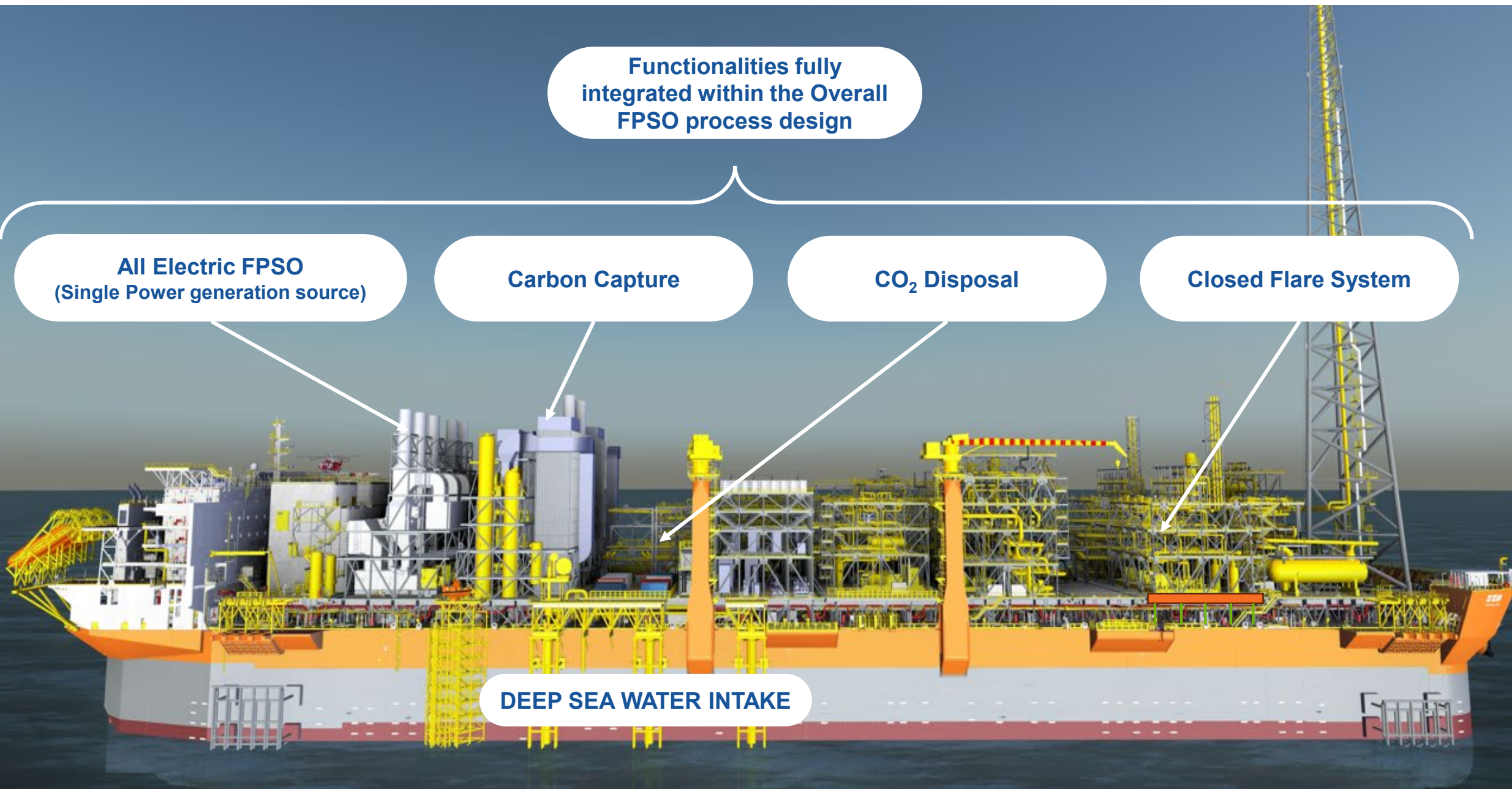
All Electric FPSO
(Single Power generation source)

Carbon Capture

CO₂ Disposal

Closed Flare System

DEEP SEA WATER INTAKE



**WANT TO BE PART
OF THAT JOURNEY
?**

